

CIRCUIT SWITCH

**ACCESSORIES
PNEUMATIC DISTRIBUTORS**



The SLT circuit switch allows to convey two pneumatic signals into one way, keeping the two pneumatic sources separated. They have aluminium body, NBR seals and brass components and are available with 1/8" and 1/4" ports.

TECHNICAL DATA

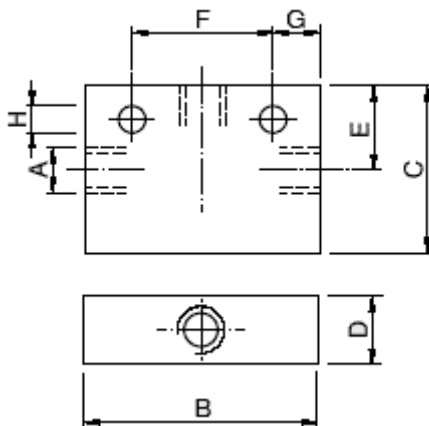
CONSTRUCTIVE FEATURES

Fluid	Filtered air
Operating pressure	1 ÷ 10 bar
Temperature range	-10°C ÷ +70°C
Materials	Body in aluminium seals NBR components in brass
Seals	Oil resistant rubber NBR
Weight (g)	SLT 8 = 60
	SLT 4 = 130

RANGE

Port	Model
1/8"G	SLT-8
1/4"G	SLT-4

DIMENSIONS



A	B	C	D	E	F	G	H	I
1/8"G	40	20	15	12,5	25	7,5	4,5	4,5
1/4"G	46	30	16	20	30	8	6	4,5